

## Transaction Information

|                     |                 |
|---------------------|-----------------|
| Tool ID             | 33B5LA          |
| Tool Status         | Warehouse       |
| Location            | Burlington, USA |
| Wafer Size          | 300 mm          |
| Fab Section         | Test            |
| Tool Available Date | 2023-03-23      |

## General Product Information

|                   |                                 |
|-------------------|---------------------------------|
| Vendor Supplier   | TEL                             |
| Model             | P12XL                           |
| Vintage           | 2005                            |
| Serial No         | PH03108                         |
| Asset Description | TEL P12XL prober dual foup VIP3 |
| Software Version  | VX works Rby00-R014.083Z        |
| CIM               | RS232                           |
| Process           | Test                            |

## Hardware Configuration (Fab)

| System Type       | Description | Quantity | Status |
|-------------------|-------------|----------|--------|
| Main System       | Prober      | 1        |        |
| Handler System    | Loader arms | 2        |        |
| Factory Interface | FOUP        | 2        |        |
| Options System    |             |          |        |
| Others            |             |          |        |

## Hardware Configuration (Subfab / Auxilliary Units)

| Description | Quantity | Status |
|-------------|----------|--------|
| NONE        |          |        |

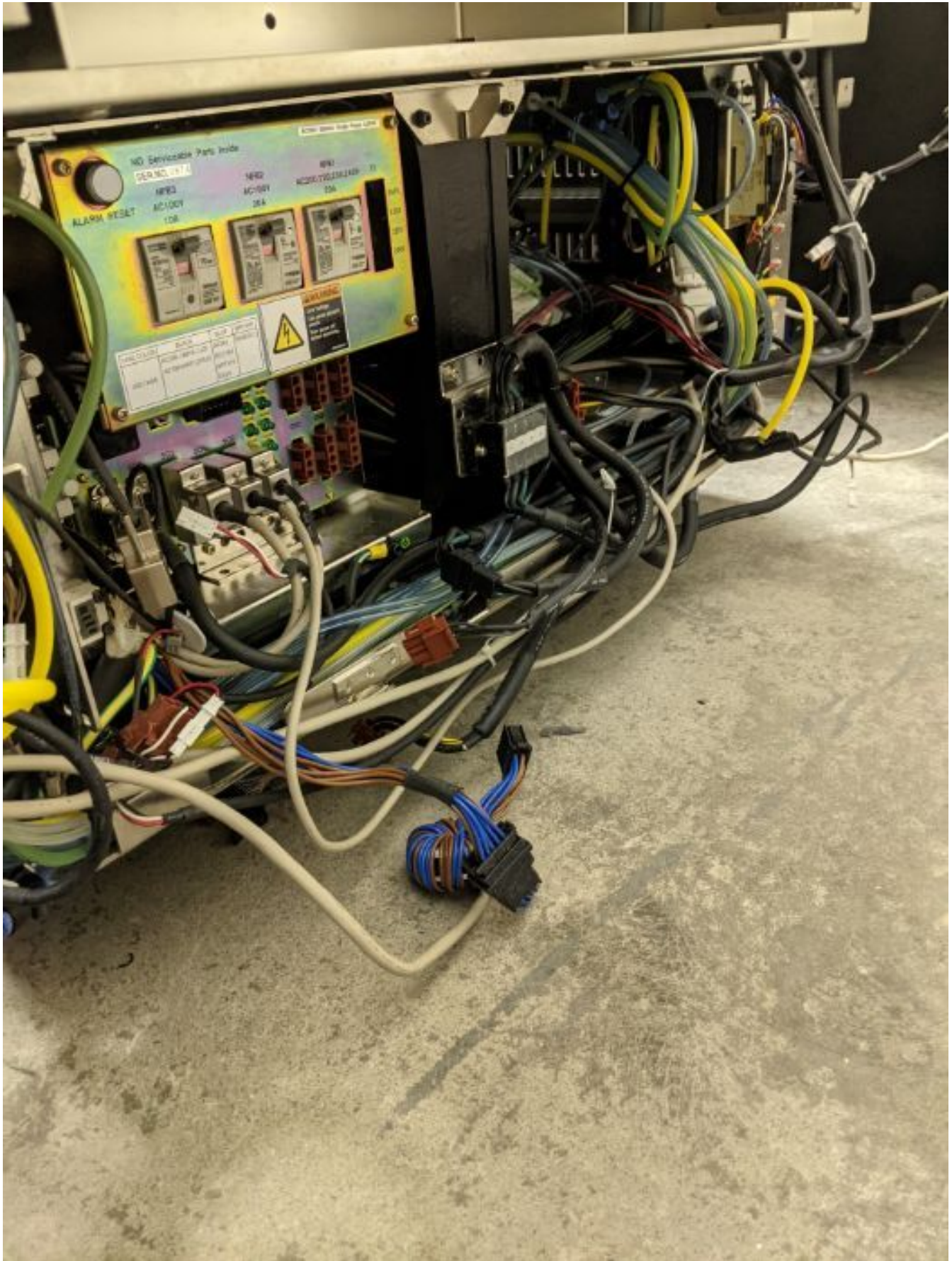
## Missing/Faulty Parts / Accesories List

| Description                  | Quantity |
|------------------------------|----------|
| Monitor                      | 1        |
| Loader upper rack base board | 1        |
| Purge air regulators         | 1        |
| Loader lower rack base board | 1        |
| Temperature controller       | 1        |
| Chuck top                    | 1        |
| MR/MC board                  | 1        |
| Loader power supply          | 1        |
| SIO 1 board                  | 1        |
| SIO 0 board                  | 1        |
| OCR camera                   | 1        |
| VIP3 board                   | 1        |

# Tool Pictures

General

Prober



General

Prober



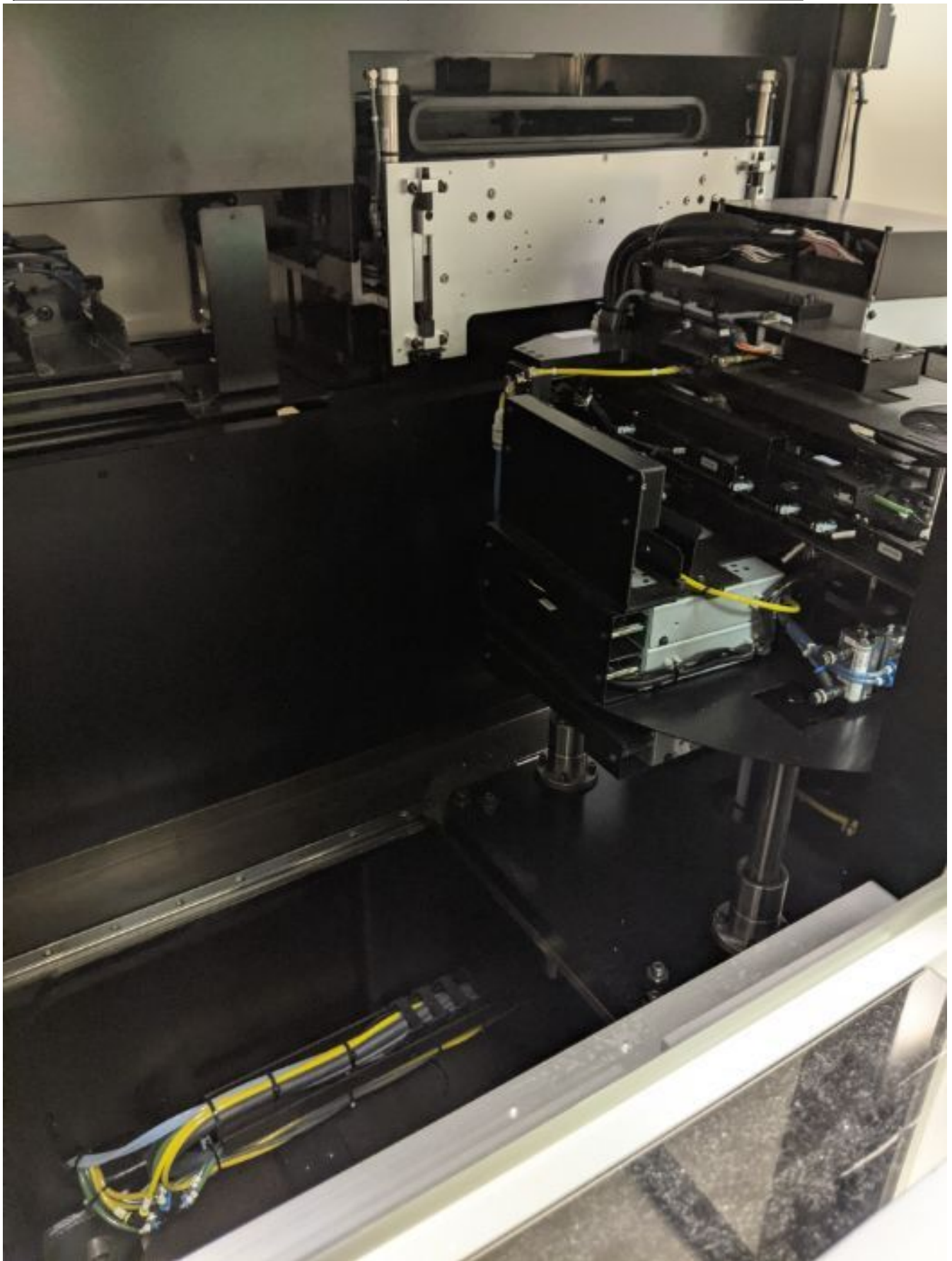
General

Prober



General

Prober



General

Prober



General

Prober





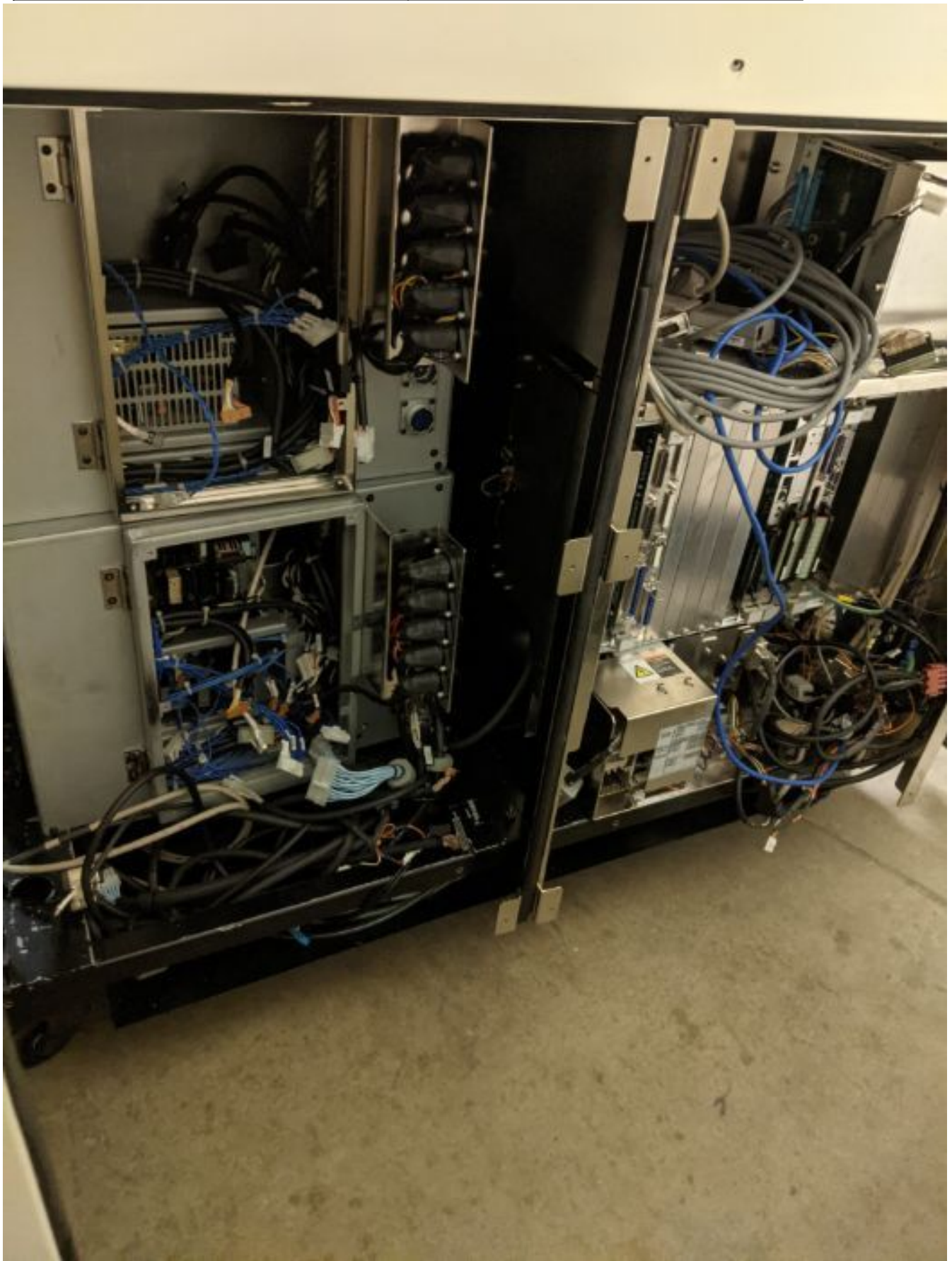
General

Prober



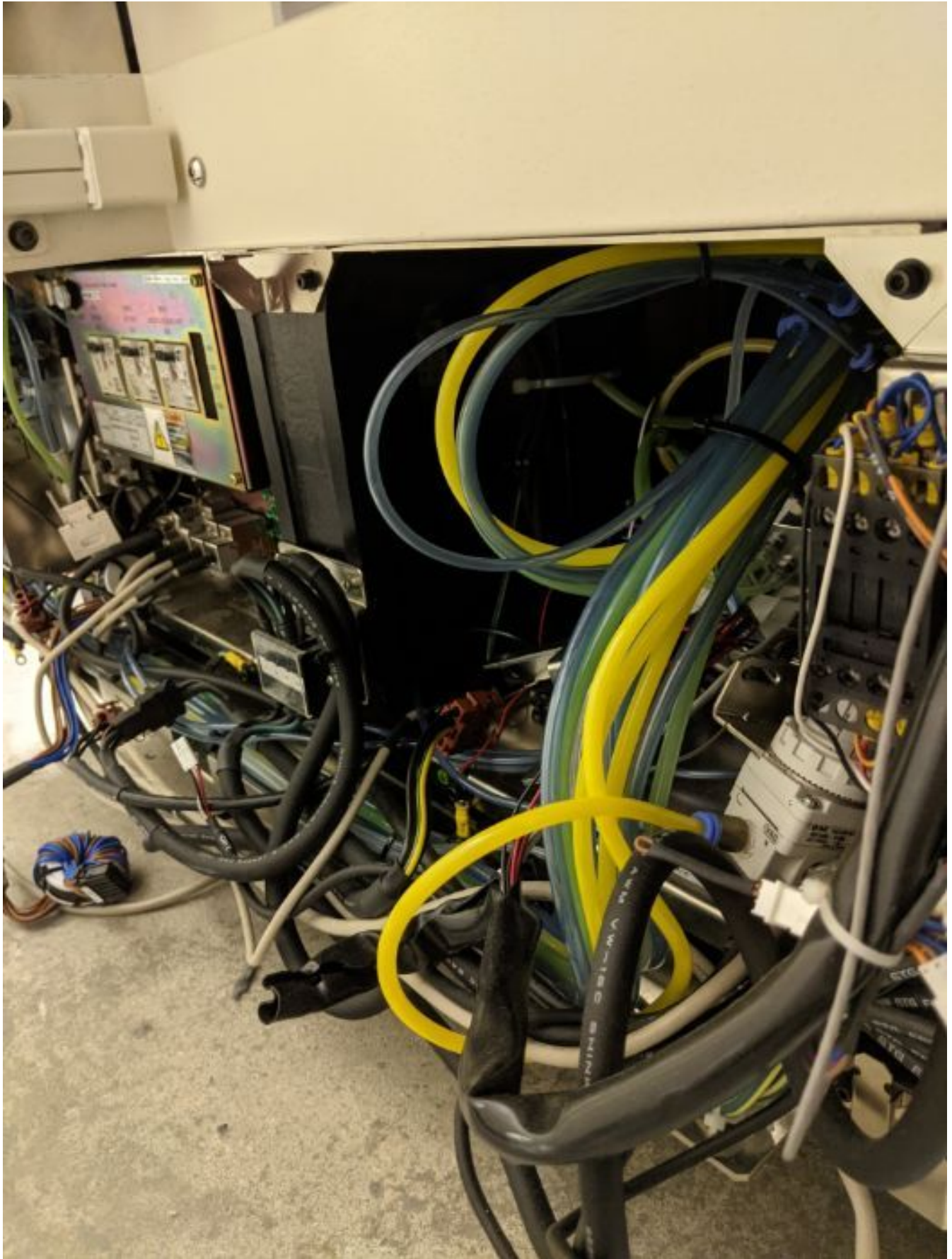
Missing Parts

NONE



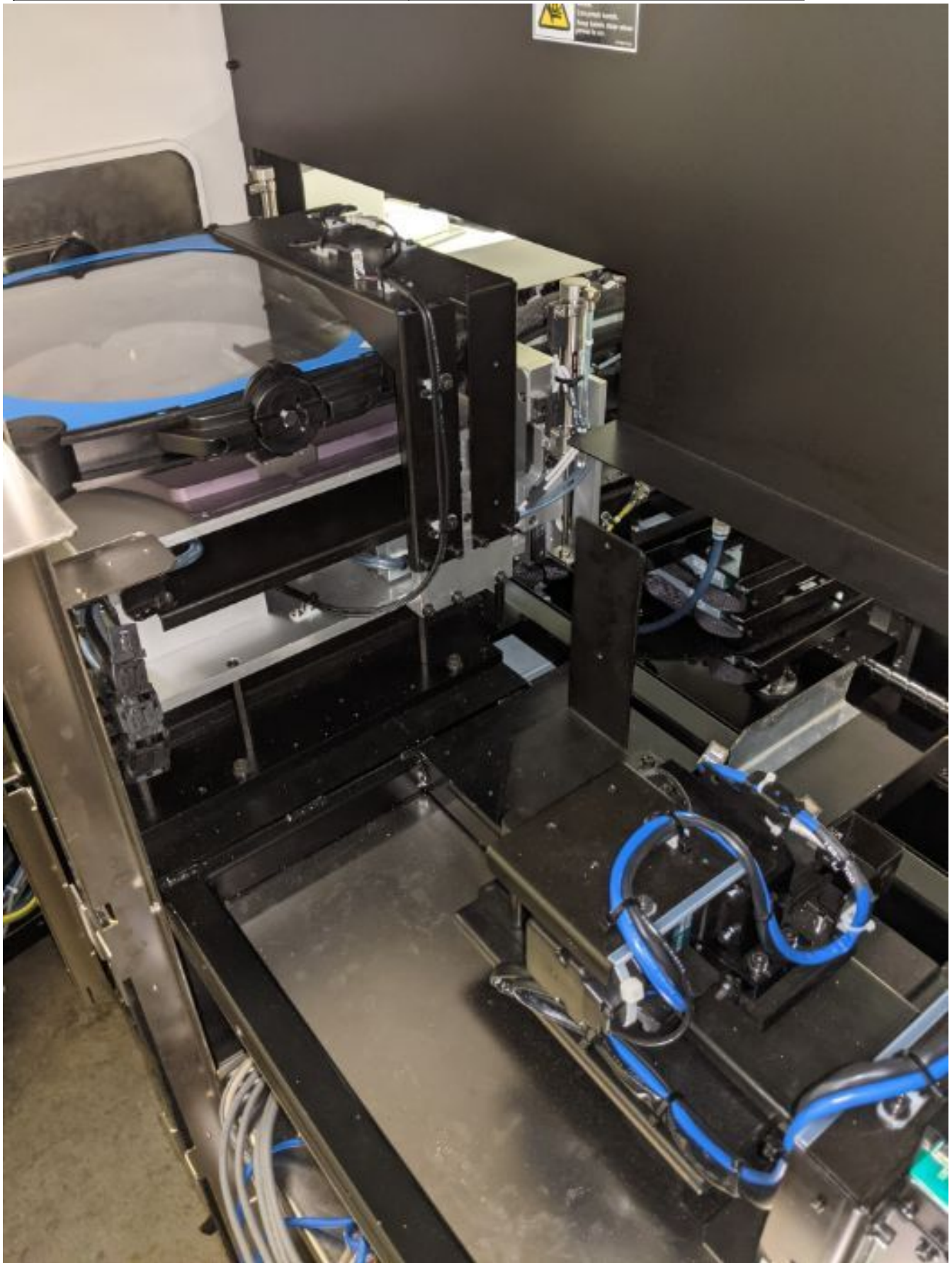
Missing Parts

NONE



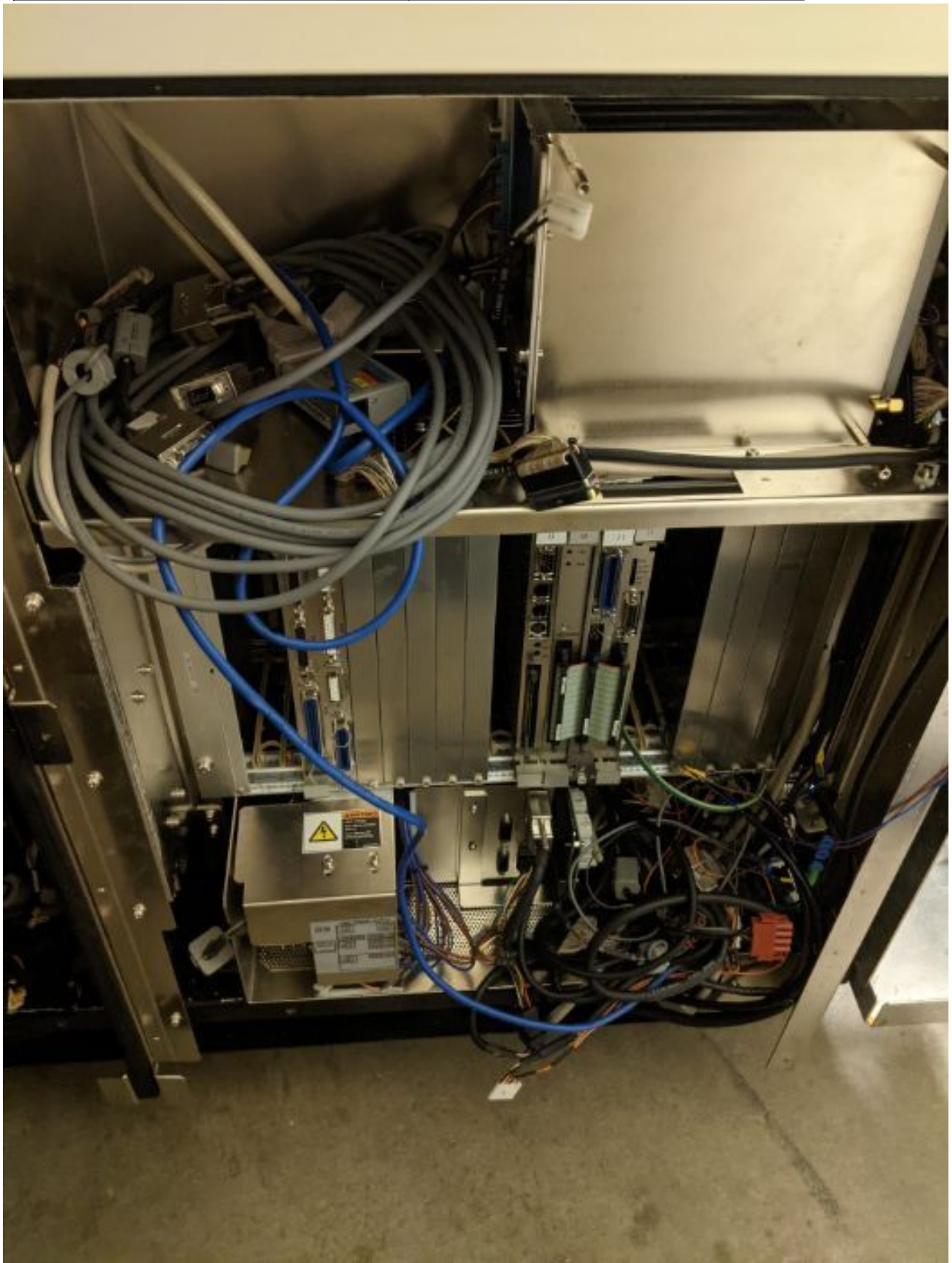
Missing Parts

NONE



Missing Parts

NONE



## Additional Configuration Files