

## Transaction Information

Tool ID	CMD2
Tool Status	Running Wafers
Location	East Fishkill, USA
Wafer Size	300 mm
Fab Section	Diffusion
Tool Available Date	2025-04-01

## General Product Information

Vendor Supplier	ASM
Model	Epsilon 3000
Vintage	2003
Serial No	033160
Asset Description	300MM ASM Epsilon 3000 EPI HEX CMD2
Software Version	Standard
CIM	SECS GEM
Process	EPI

## Hardware Configuration (Fab)

System Type	Description	Quantity	Status
Main System	Main Tool	1	OK
Handler System	Standard		OK
Options System			
Others	Upgrades 2004-2011	7	OK

## Hardware Configuration (Subfab / Auxilliary Units)

Description	Quantity	Status
NONE		

## Missing/Faulty Parts / Accesories List

Description	Quantity
na	

# Tool Pictures

General

Main tool







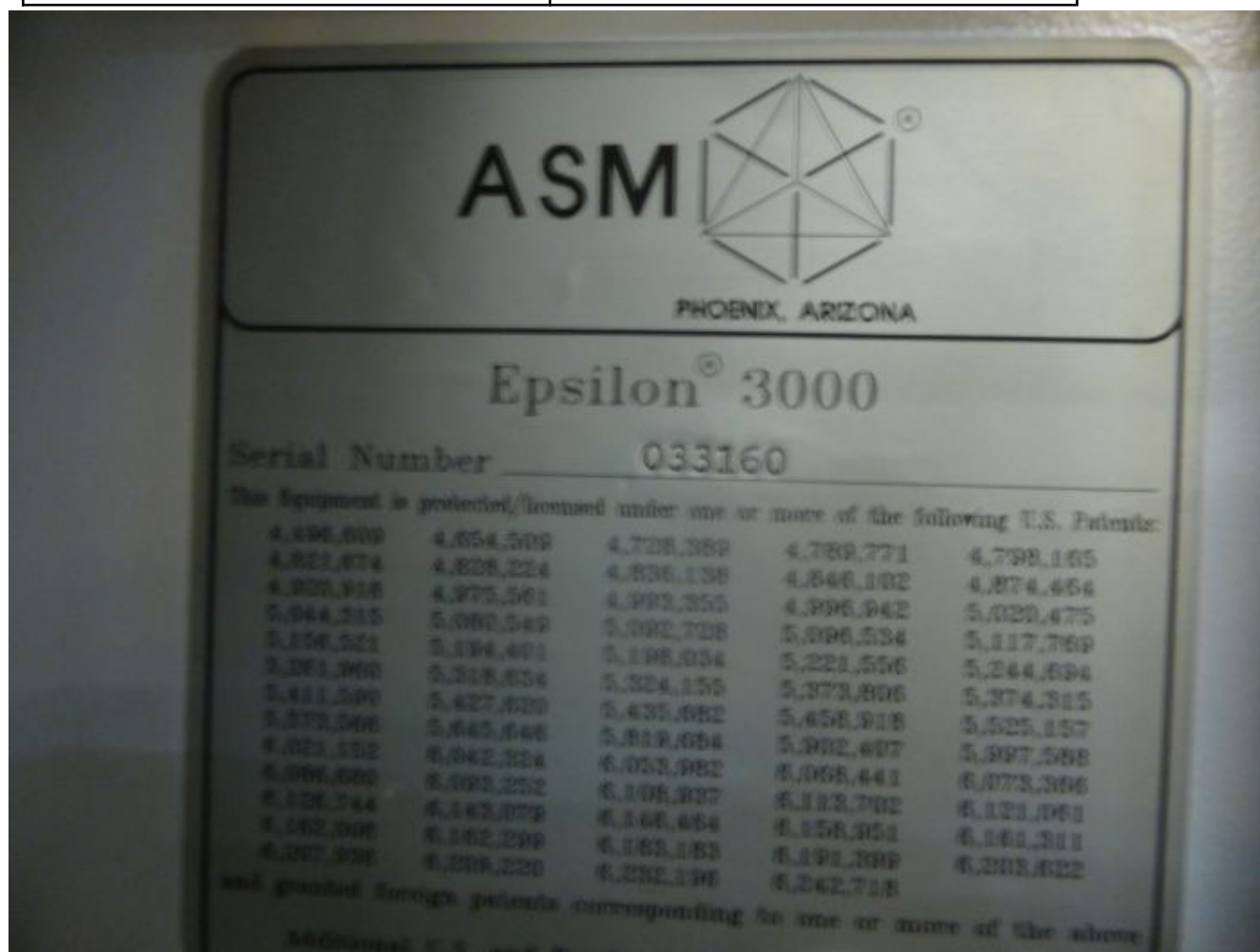












## Additional Configuration Files