

# Transaction Information

Tool ID	TRK421
Tool Status	Running Wafers
Location	Dresden, Germany
Wafer Size	300 mm
Fab Section	Lithography
Tool Available Date	2025-02-01

# General Product Information

Vendor Supplier	TEL
Model	LITHIUS
Vintage	2005
Serial No	MD-G360588
Asset Description	2-Block-Machine
Software Version	300.0.130.2
CIM	SECS
Process	Coat, Development

## Hardware Configuration

System Type	Description	Quantity	Status
Main System	Lithius 2-Block	1	OK
Handler System	TEL robot (CRA/PRA_3x/IRAM/IRAS)		OK
Factory Interface	FOUP	5	OK
Others			
Options System			

## Excluded Items List (Pumps, Chillers & Abatement are all excluded)

Description	Quantity
NONE	

\* List above may or may not be comprehensive. Tool is sold in "as-is" condition. To ensure your satisfaction, we strongly recommend to make an appointment to inspect this and every tool you are interested in.

## Tool Pictures

General

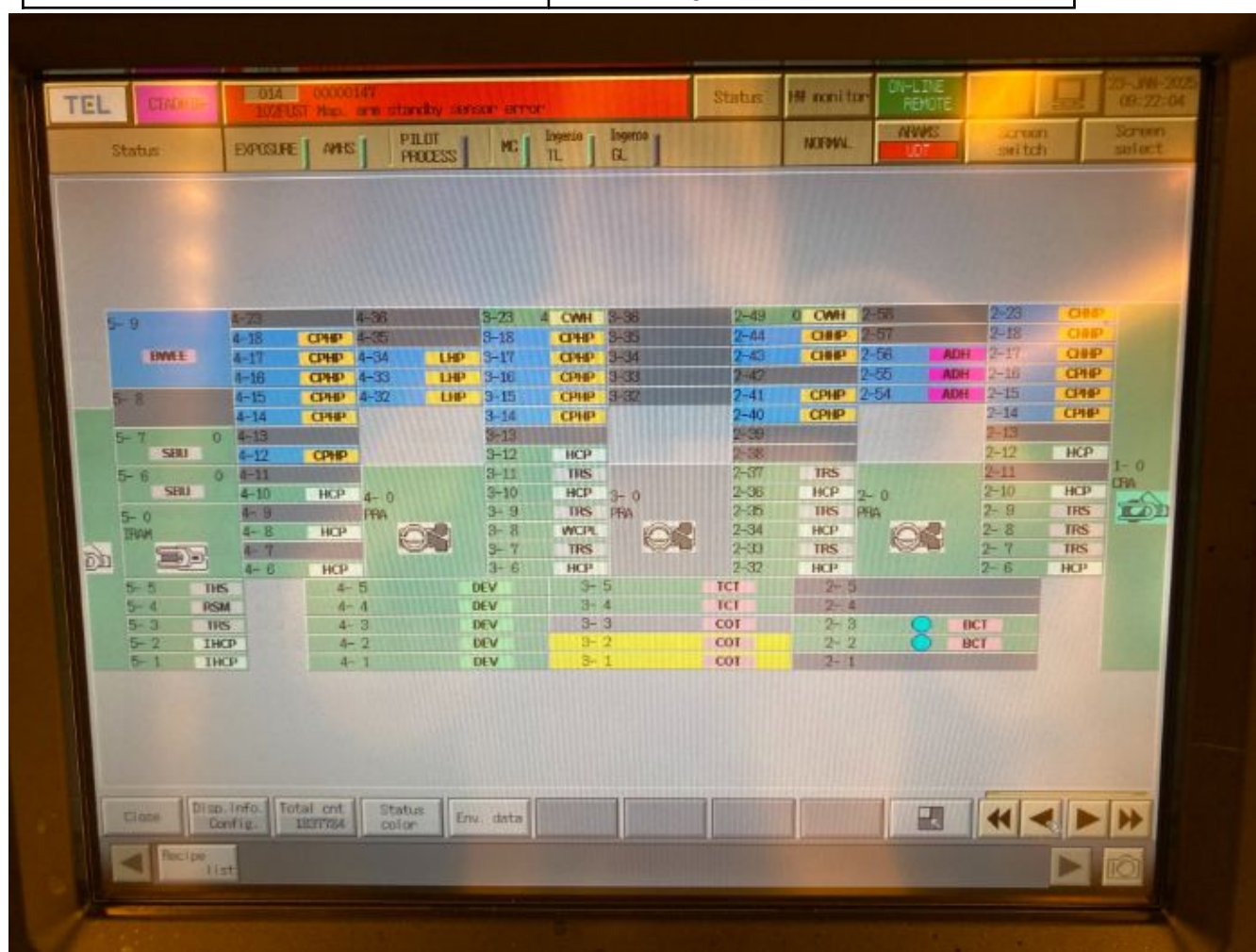
Track\_mainlevel





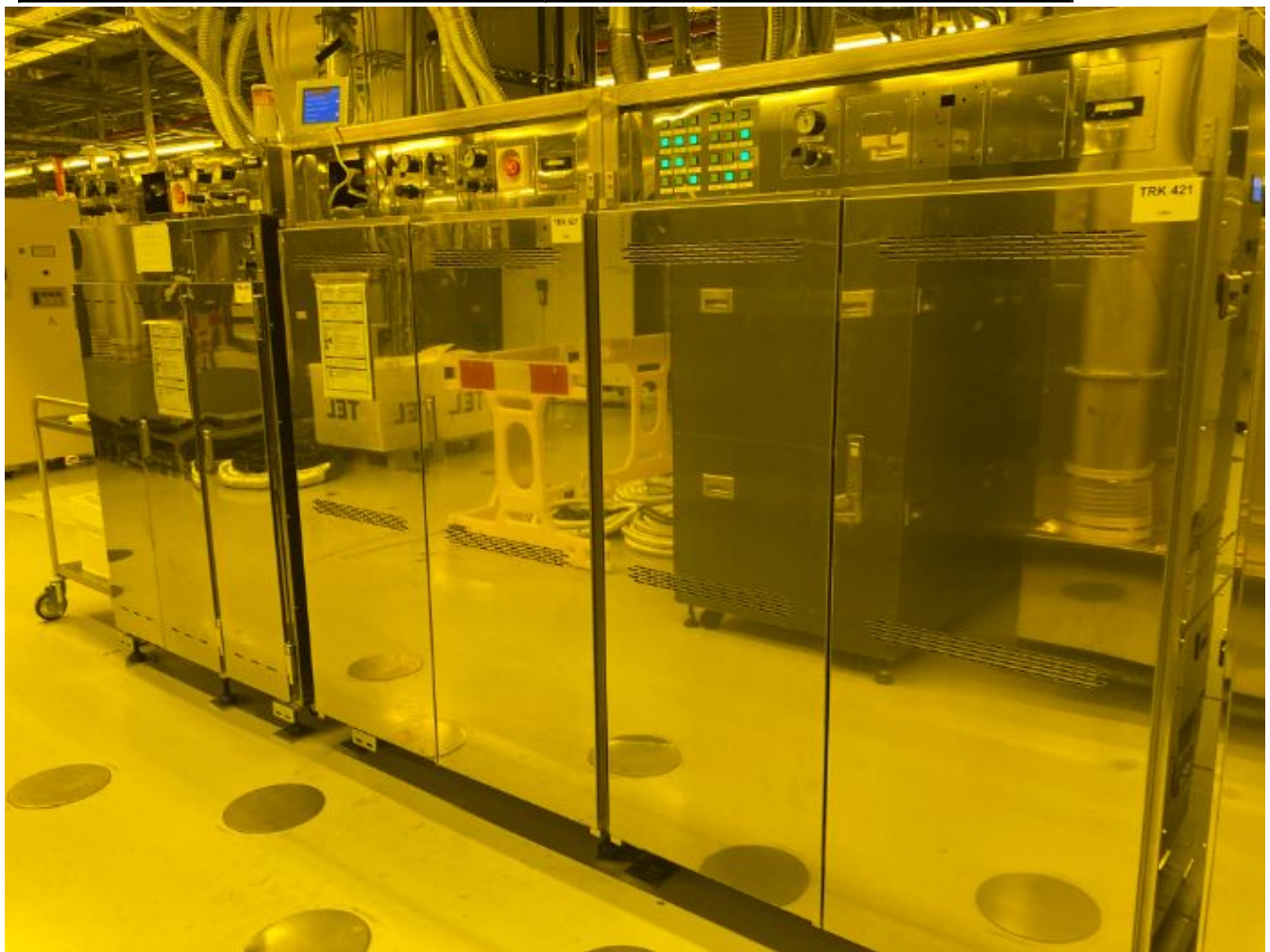






















Manufacture Serial

number\_plate



Manufacture Serial

number\_plate

